

UNCOVER RECOVER

DISCOVER

SAN ANSELMO

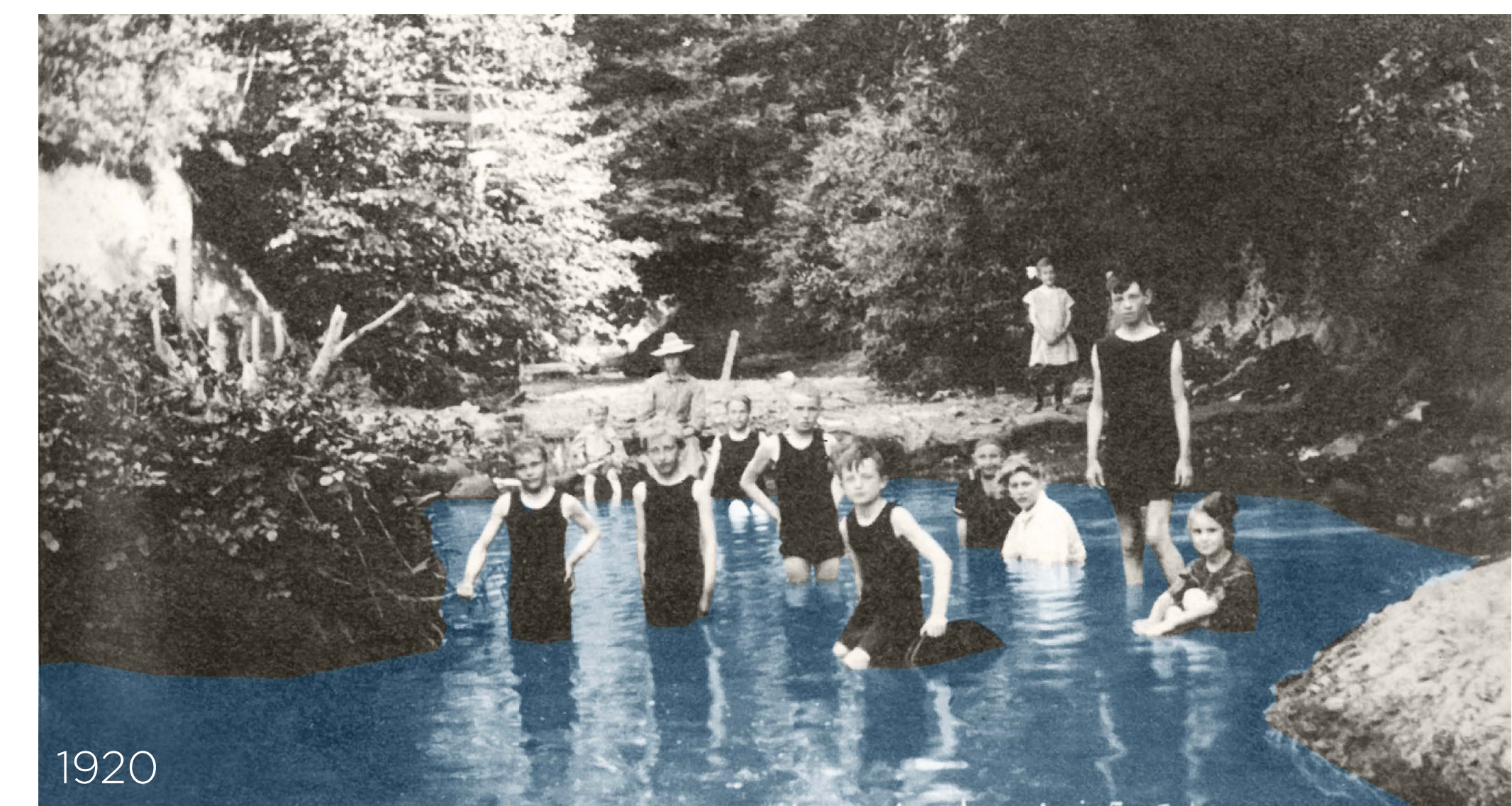
Discover *verb*
to see, find, gain sight or knowledge of (something previously unseen or unknown)

Creek Park is a one-of-a-kind place poised for re-discovery. Our goal is to help people connect with the Park's unique assets by improving visibility, regaining Creek access, and expanding the Park to the street edges. These bold moves will allow new generations of residents and visitors to experience the beauty and history of the site.

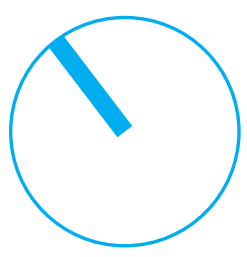
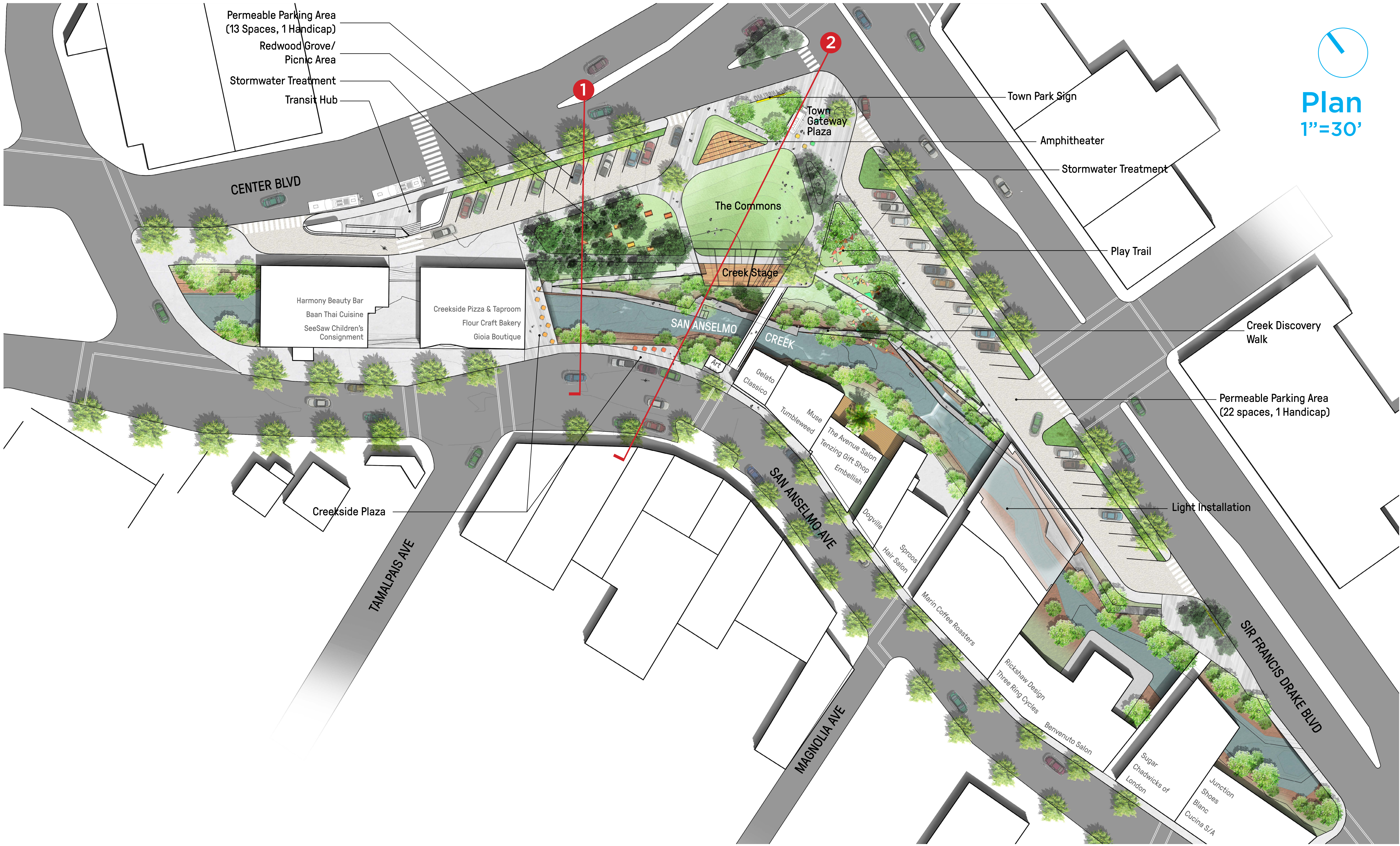
We were inspired by historical records of Creek Park.



The 1884 San Anselmo Depot brought new visitors to the site and marked an iconic sense of arrival. The unique shape of its roof inspired the design of the new stage.



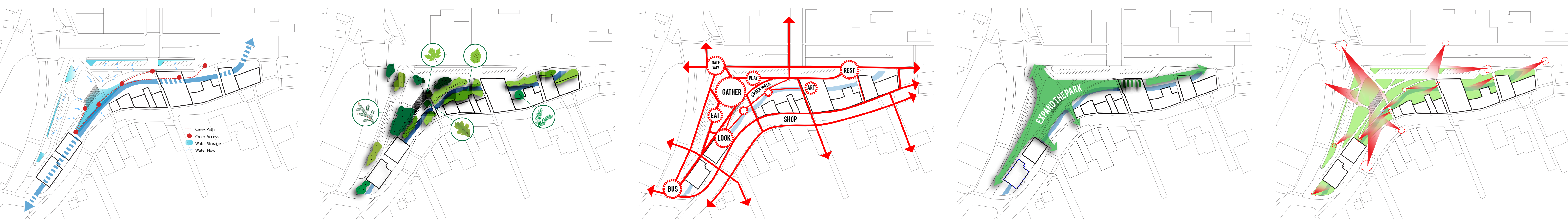
1920
The people of San Anselmo have always been drawn to the water. We want want restore Creek access so people can once again gather by the water.



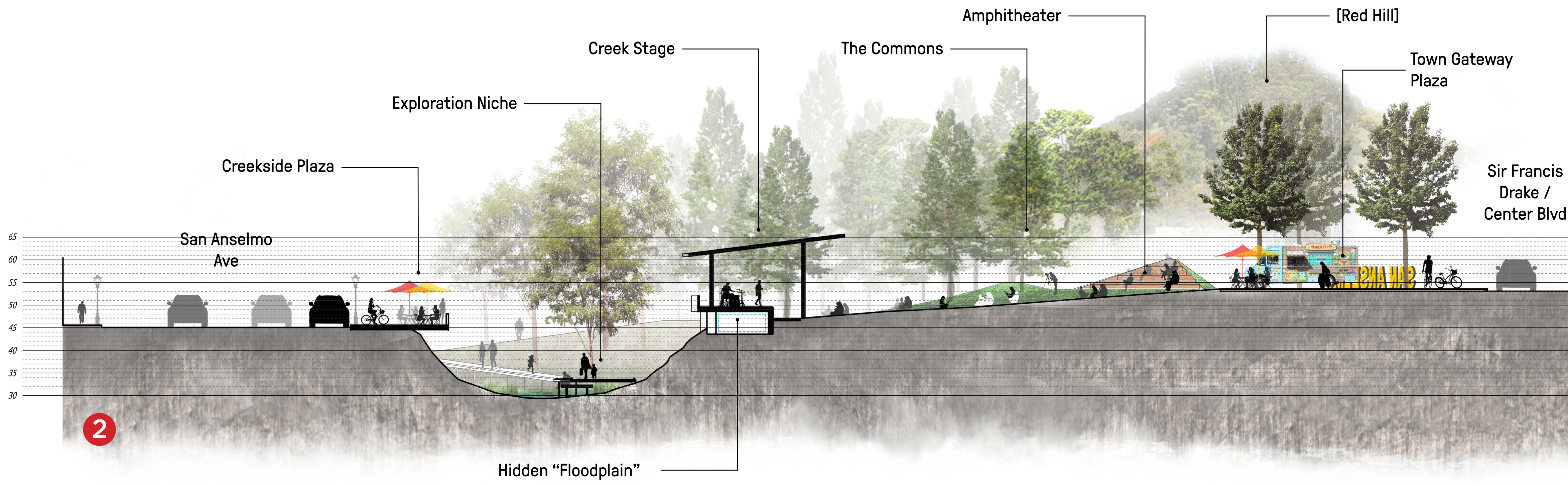
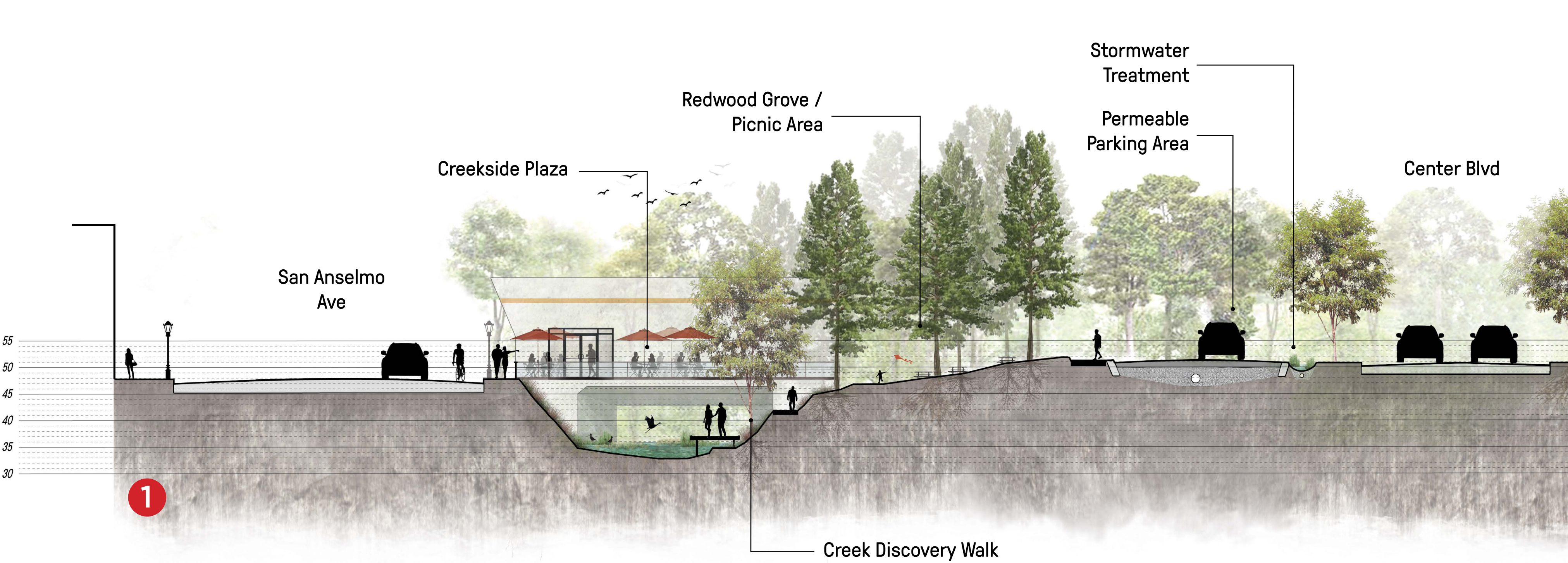
Plan
1"=30'

Guiding Principles

These principles are a simple toolkit to achieve project goals



- 1. Bring People to the Creek
- 2. Protect Mature Trees
- 3. Improve Site Connections
- 4. Expand The Park
- 5. Open View the Park





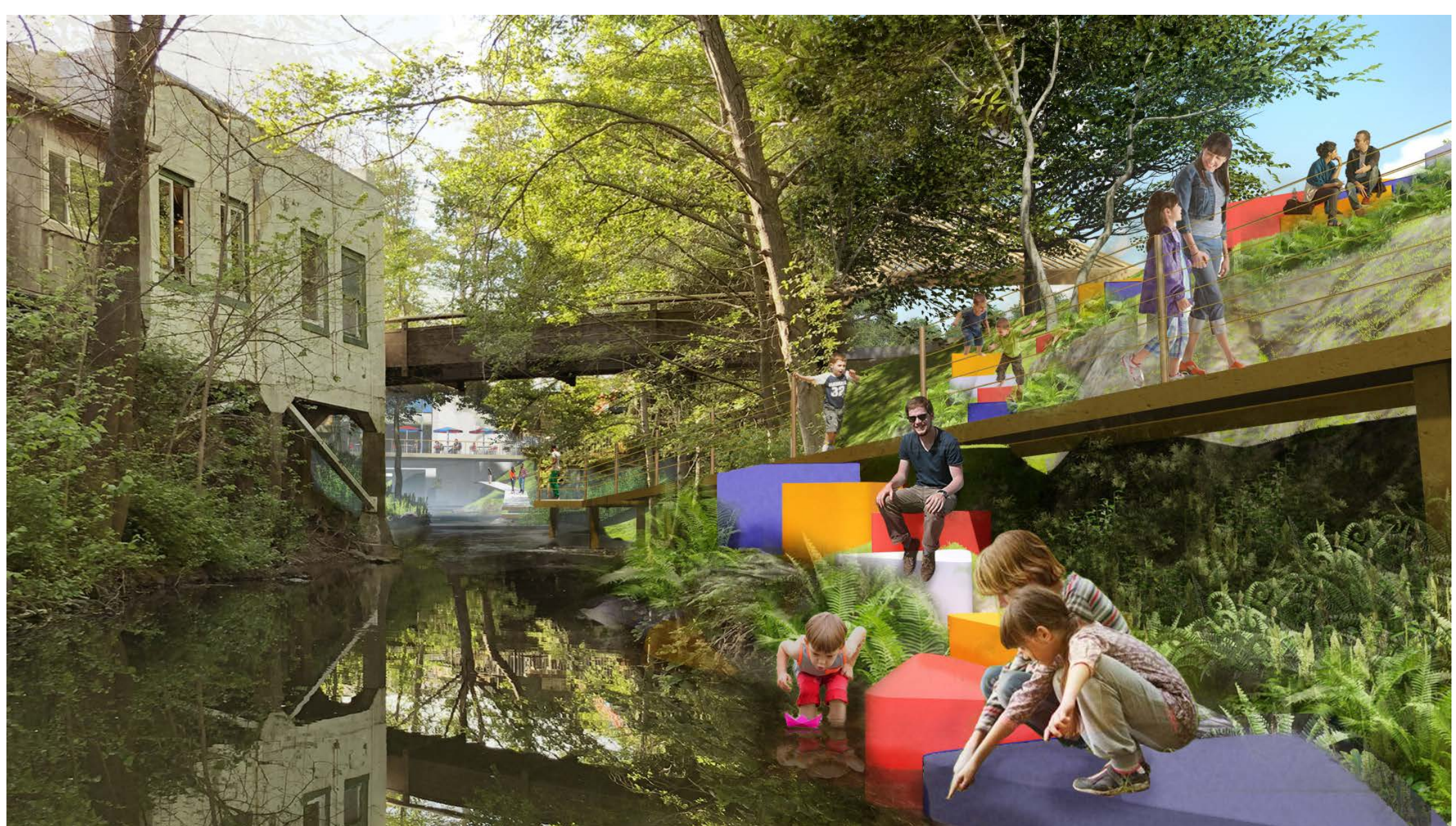
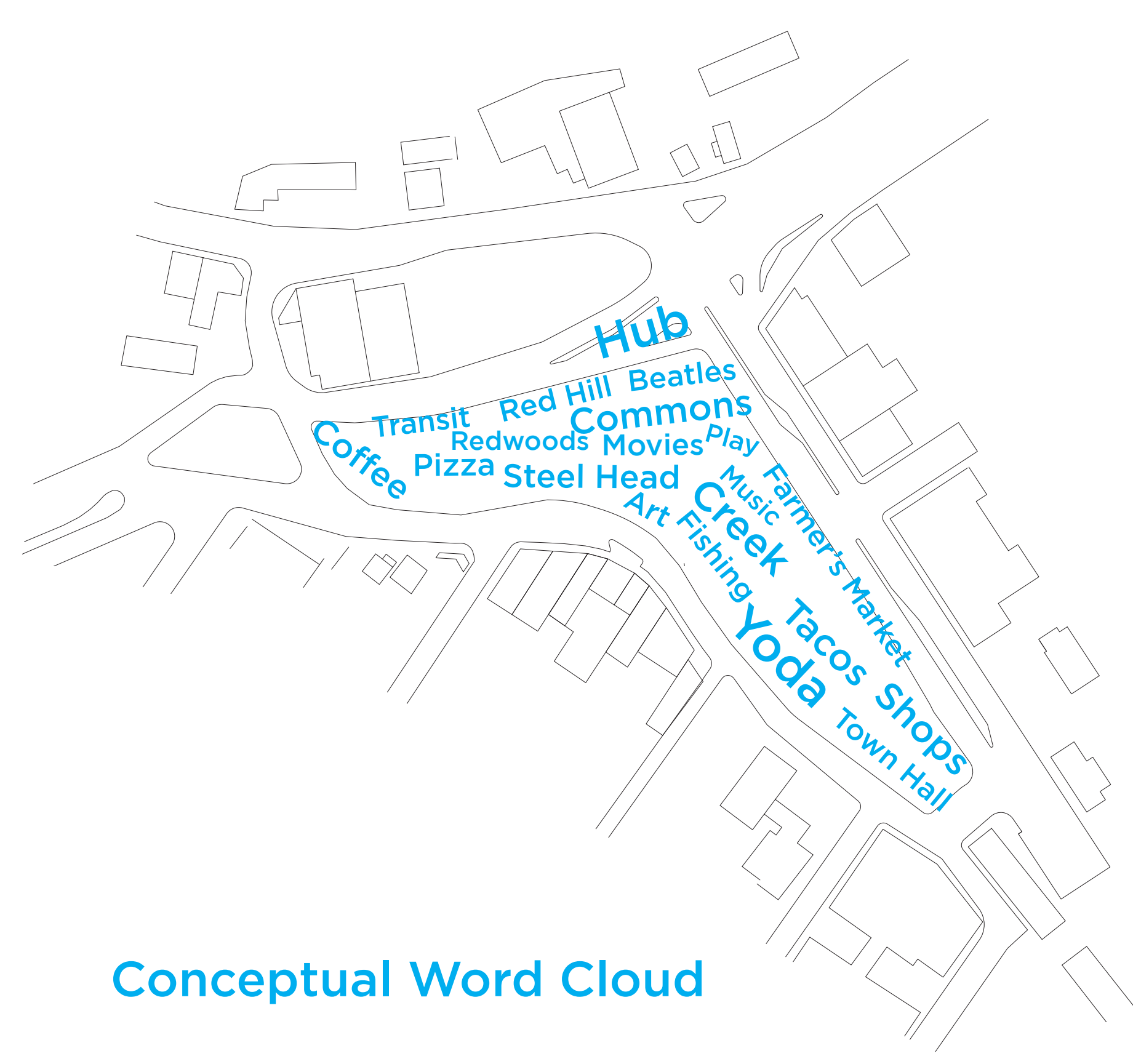
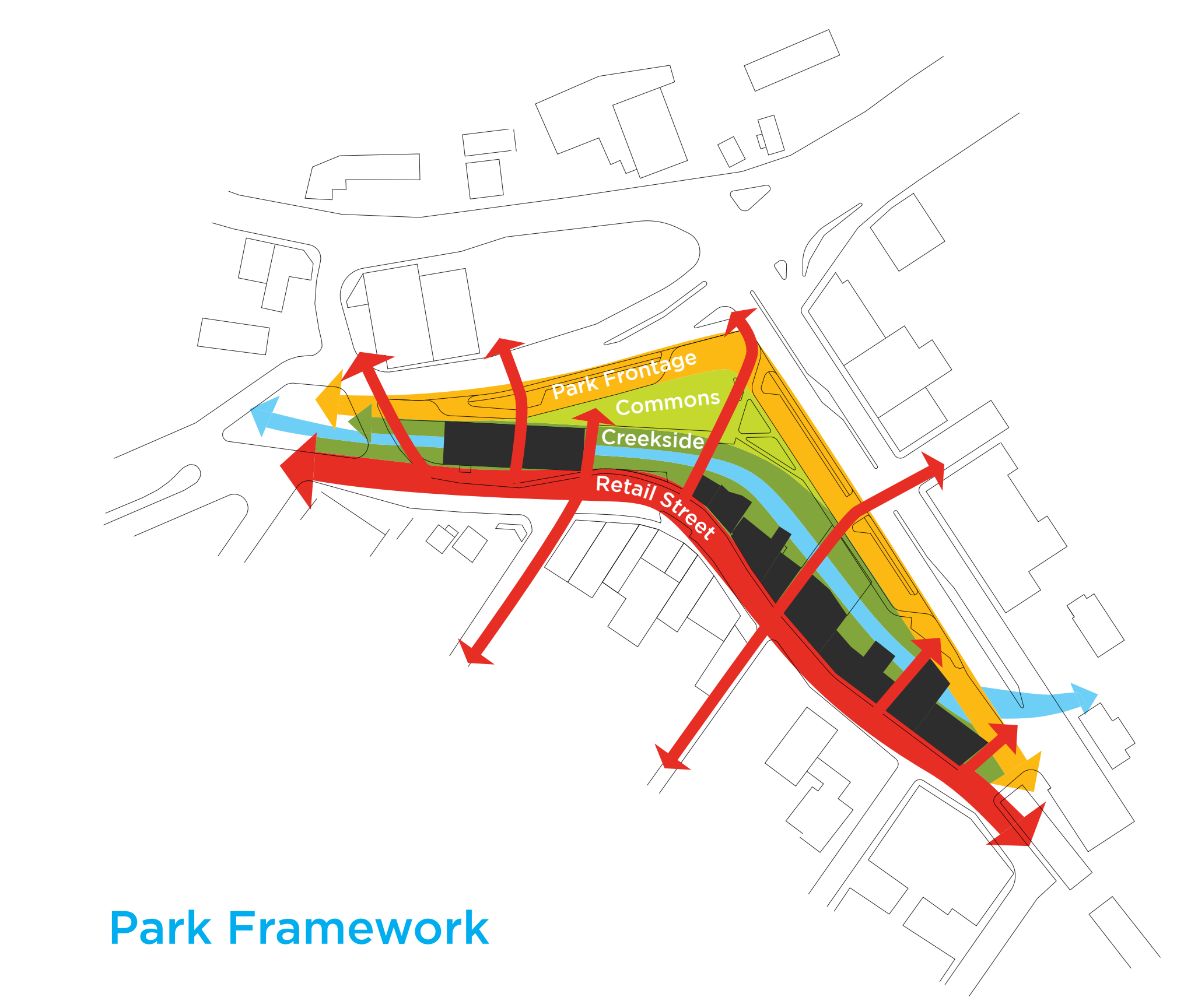
Opening up the corner of the The Hub creates new view corridors to Creekside Commons. There is an opportunity for an iconic signage that tells visitors that they have arrived in San Anselmo.



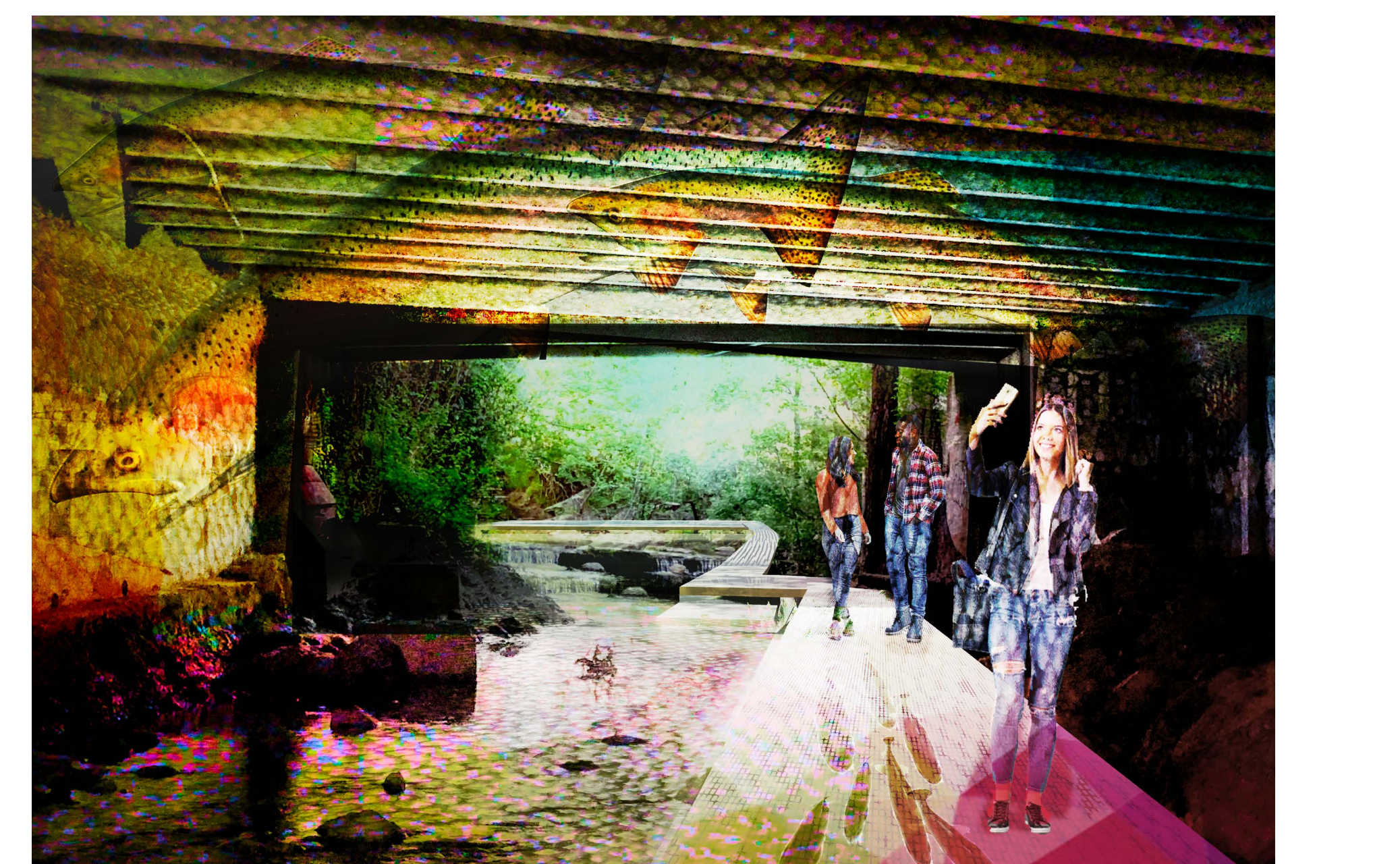
An expanded Commons allows for increased capacity and flexibility. Views are opened up to Red Hill in the distance. The redesigned Stage can accommodate larger outdoor theater or music events. The Stage form was inspired by the original San Anselmo Station Depot which featured a memorable deep gabled roof.



Removal of structures presents a great opportunity to more deeply integrate San Anselmo Ave. and the Creek. The Creekside Plaza allows people to dine, enjoy the water, and watch park-goers.



An interactive Play Trail creates discovery moments, inviting kids and families to find their way down to the creek in an exciting new way.



Under the bridge building, light based art installations surprise and delight. The lighting is inspired by the iridescent scales of Steelhead Trout, which inhabit the Creek