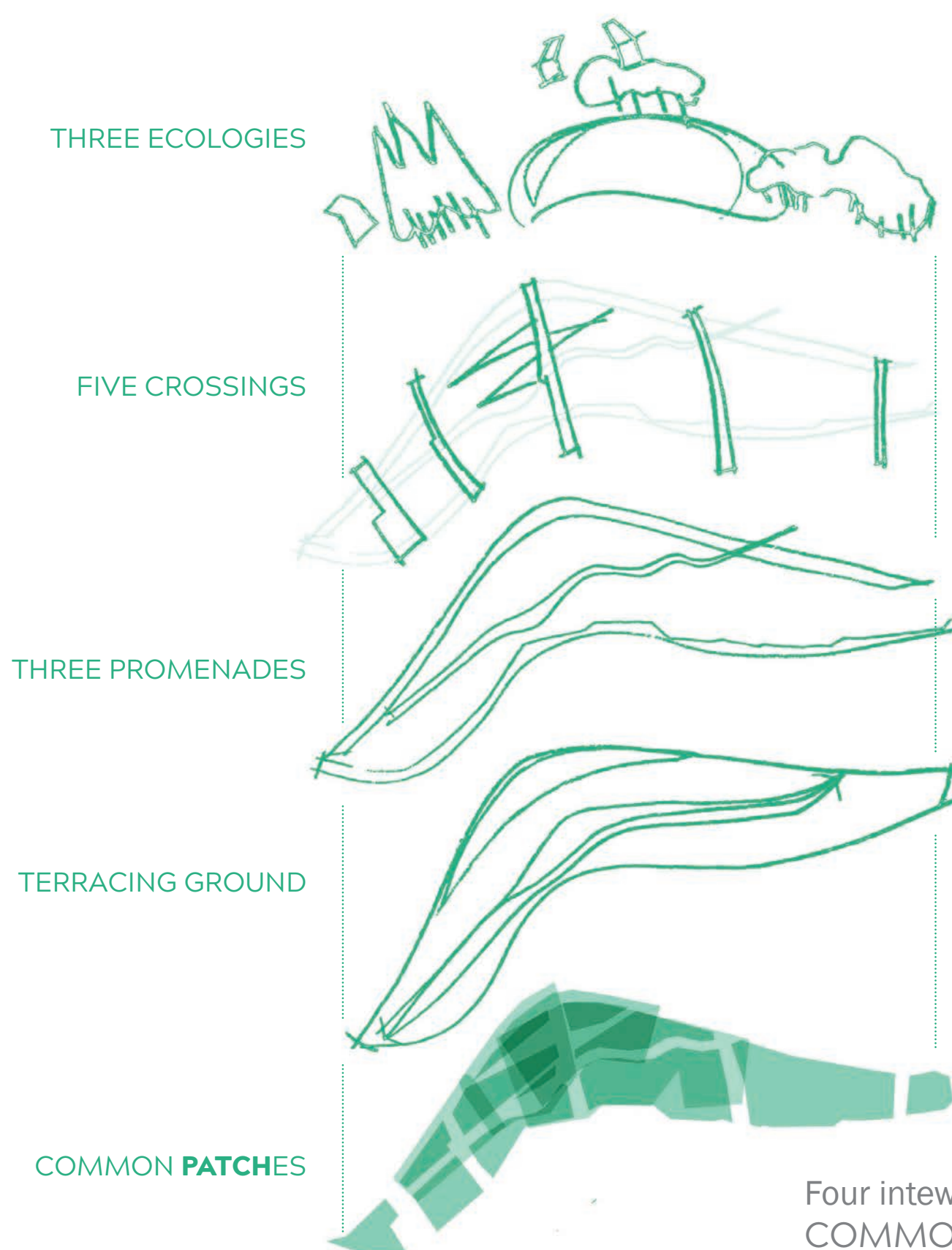


COMMON PATCHES

a LANDSCAPE concept

COMMON PATCHES reenvision Creekside Park as a new type of commons. The layering system of contoured ground, transversal promenades and crossings yields a site framework that weaves all programs together and creates a patchwork of unique and interwoven spaces.

Similar to the way patch ecology systems behave as independent units, while adding up to a comprehensive whole, **COMMON PATCHES** illustrates a new kind of commons.



CONCEPT EXPLODED AXON

Four interwoven layers create the distinct spaces for **COMMON PATCHES** which connect and combine as different programs take place in the new Creekside Commons.

The section of the creek is revisited to allow for a limited area of riparian.

KEY MOVE 2

The sidewalk along Sir Francis Drake and Center Boulevard is transformed with a necklace of follies that provide an urban marker and gateway for the new park, while providing shelter for transit users and "back stage" services for event days.

KEY MOVE 1

The grade on the northeast bank of the creek is expanded to increase visibility of the creek from the central commons patch, and also augment the flood control capacity of the public space.

THE REDWOOD GROVE

CALIFORNIA CHAPARRAL

RIPARIAN EDGE

THREE PATCH ECOLOGY UNITS

LEGEND

- A central bridge overlook
- B terracing amphitheatre patch
- C san anselmo walk overlook
- D creekside commons gateway
- E creek deck and stage
- F urban promenade seating pods

DIVERSE PAVING PALETTE

0 30 60 120ft

REIMAGINE **CREEKSIDE COMMONS**

SAN ANSELMO, CALIFORNIA

MAY 2019

COMMON PATCHES

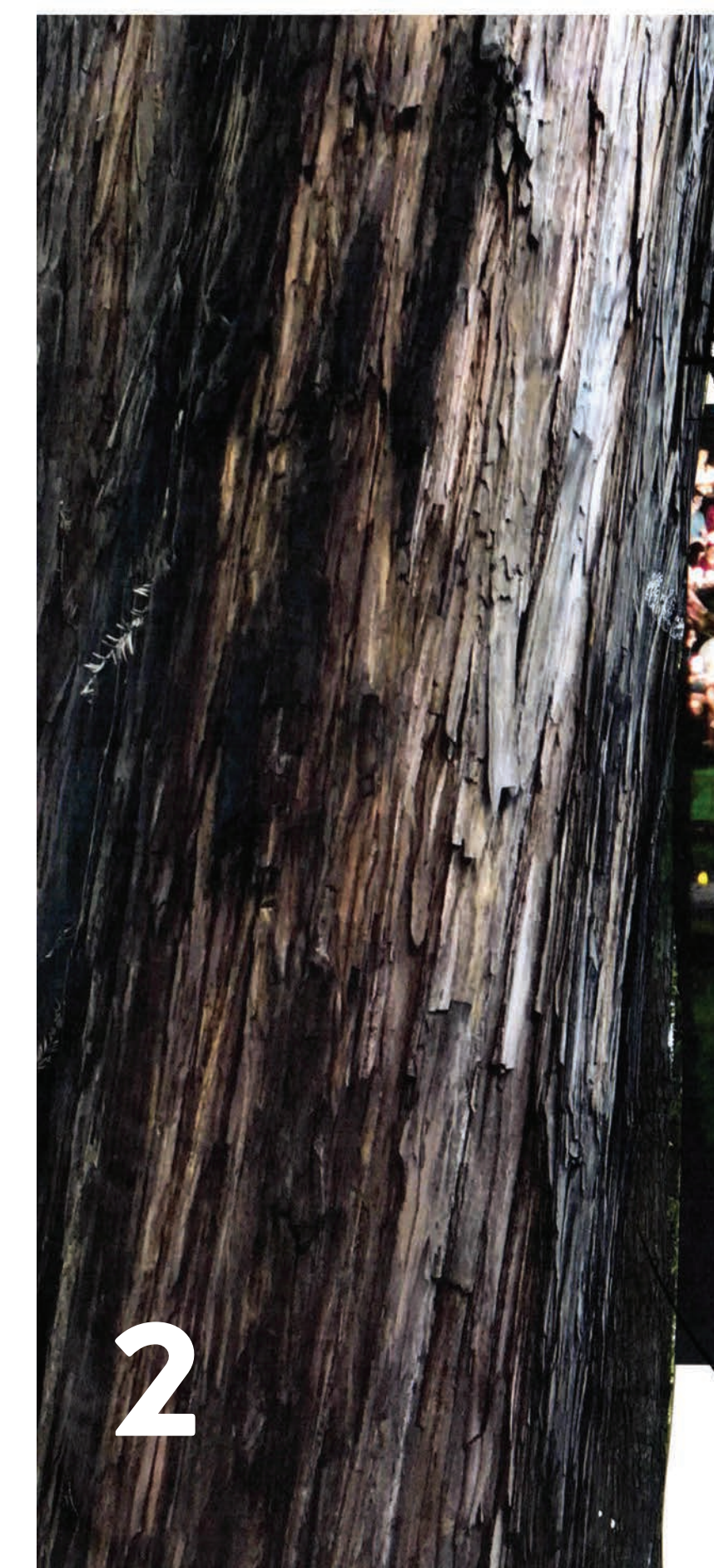
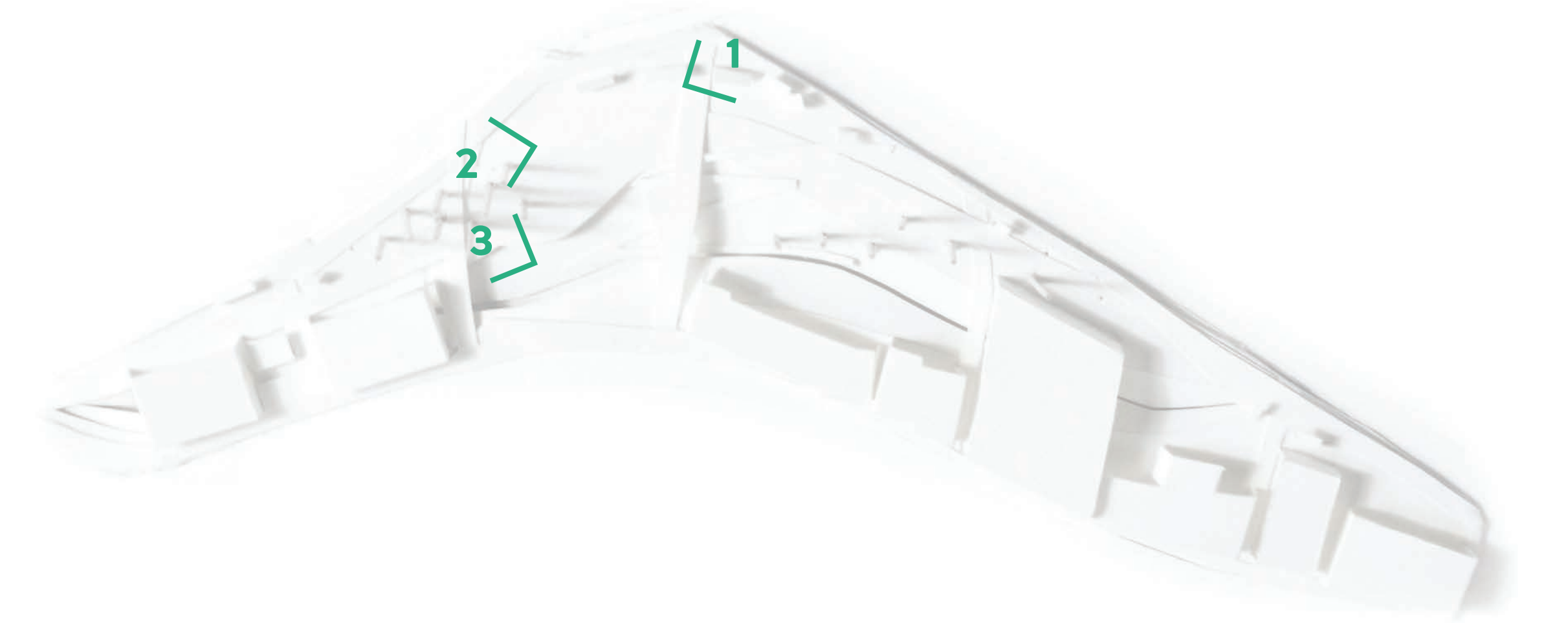
a LANDSCAPE concept



1

URBAN PROMENADE

The former parking lot area is transformed into a new walk and promenade along Sir Francis Drake. On weekends, the Urban Promenade can be activated with food trucks and farmers' market.



2



COMMONS AMPHITHEATRE

The central 'patches' of the park become a large outdoor gathering space and amphitheatre during events.



PUBLIC ART
The crossings present an opportunity to incorporate public art (permanent or temporary) to highlight the character of each.



3

REIMAGINE

CREEKSIDE COMMONS

SAN ANSELMO, CALIFORNIA

MAY 2019